

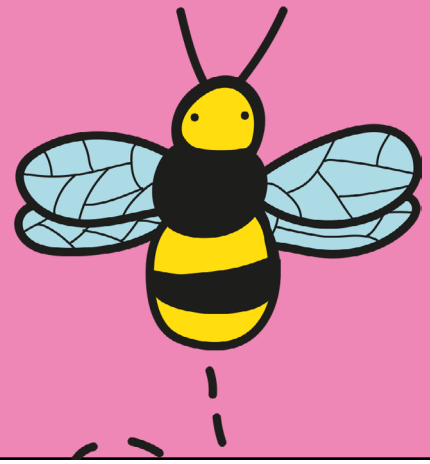
Why Bees Need Homes



Bee Positive!

www.bee-positive.net

Bee Houses



Bees are facing many challenges and one of them is homelessness. To make your garden truly pollinator friendly, creating shelter and nesting sites and providing water is as essential as planting.

It's a popular myth to think of bees living in hives or colonies, as honey bees do, but there are over 240 species of wild bee in the UK that are solitary bees because they make individual nests.

Most species nest in small tunnels or holes in the ground, others use the hollow stems of dead plants, or tunnels bored into dead wood by beetles.

With the loss of so much land to human development (Britain has lost 97% of wild flower meadows since the 1930's) homelessness is a

significant problem for our wild bees. Fortunately we can help. This can be as simple as leaving a wild patch in your garden, or drilling some holes in old logs to make a nesting tunnel, but why not make a bee house?

The kinds of wild bee that are likely to take up residence in your bee house are mason bees and leafcutter bees both of which are non aggressive and very safe around pets and children because they don't even have a sting! They don't live in hives, make honey, or swarm but they are wonderful pollinators especially of fruit.

To make your own bee house check out these guides which range from simple cottage to fancy mansion!

[Making a bee house](#)

[Bee House by RSPB](#)

[How to make a bee hotel](#)

[Providing water](#)